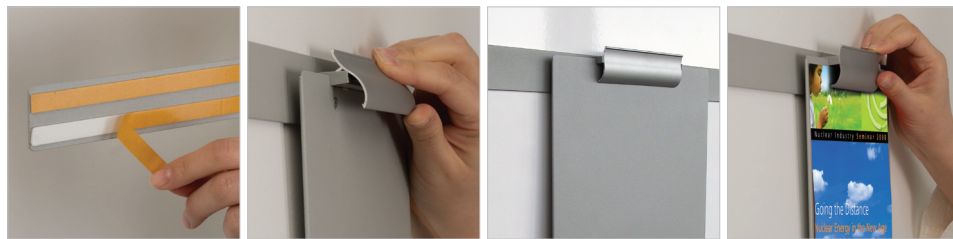


# Clip Board



See movie at our website [www.mtdisplays.com.tr](http://www.mtdisplays.com.tr)



Heavy duty, textured steel Clip Board is designed for the most demanding environments such as healthcare, offices, catering and any outdoor work. Stain free surface allows easy cleaning of the product. It is complete with silver anodised, strong and high capacity snap-open clip. Round corners allows using in busy work areas.



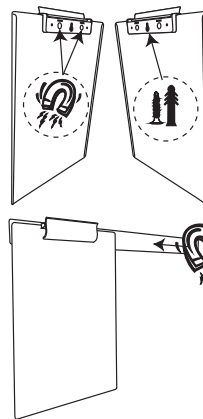
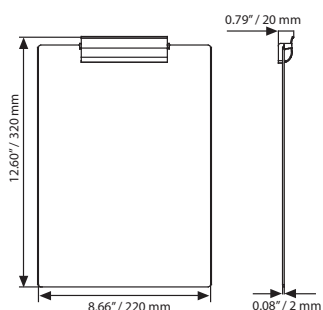
Suitable for A4 papers. Standard with paper clip and magnet on the back. Peel the tape and stick backing for easy application. Please clean the surface before applying the double-sided tape for better application.



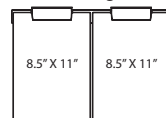
Optional steel bar for hanging in multiples of 8.5"x11". Should be ordered separately! Steel bar has double sided tape at the back for wall application.



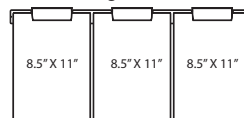
**1X(8.5"x11") Clip Board**  
Steel bar lenght 11.81"x1.38"mm



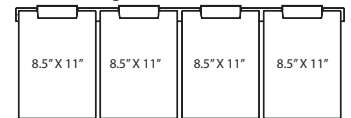
**2X(8.5"x11") Clip Board**  
Steel bar lenght 18.11"x1.38"



**3X(8.5"x11") Clip Board**  
Steel bar lenght 27.56"x1.38"



**4X(8.5"x11") Clip Board**  
Steel bar lenght 37.01"x1.38"



| MATERIAL : Steel powder coated |                      |                  | WEIGHT       | PACKING SIZE                  |
|--------------------------------|----------------------|------------------|--------------|-------------------------------|
| ARTICLE                        | DESCRIPTION          | CAPACITY         | WITH PACKING | *W X H X D                    |
| UCIB0000A4                     | CLIP BOARD           | 8.5" X 11"       | 2.645 lbs    | 9.84" X 13.78" X 0.83"        |
| UCIBD002A4                     | CLIP BOARD WALL UNIT | 2 X (8.5" X 11") | 0.617 lbs    | 3.15" X 4.72" X 4.92" (5 Pcs) |
| UCIBD003A4                     | CLIP BOARD WALL UNIT | 3 X (8.5" X 11") | 0.661 lbs    | 3.15" X 4.72" X 4.92" (5 Pcs) |
| UCIBD004A4                     | CLIP BOARD WALL UNIT | 4 X (8.5" X 11") | 0.925 lbs    | 3.15" X 4.72" X 4.92" (5 Pcs) |



\*W:Width H: Height D: Depth