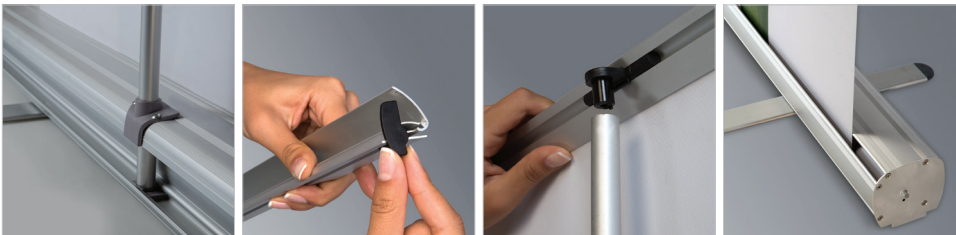
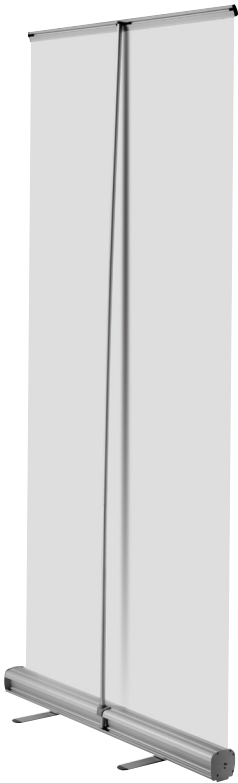


# Retractable Roll up Banners



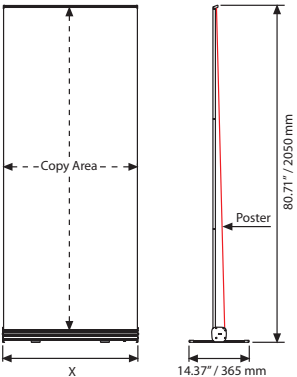
The rolling cylinder comes ready at the point available to place in the work. After the placement of the art work, the cylinder runs immediately once the pin on one end is off. The rolling cylinder can be set up and stretched to the required tightness.



Aluminum body



Black carry bag



| MATERIAL : Silver anodized aluminum |                 |                 |        | WEIGHT       | PACKING SIZE           |
|-------------------------------------|-----------------|-----------------|--------|--------------|------------------------|
| ARTICLE                             | POSTER          | COPY            | X      | WITH PACKING | *W X H X D             |
| TWKSRS1085                          | 33.46" X 78.74" | 33.46" X 77.56" | 34.01" | 5.985 lbs    | 4.92" X 33.86" X 4.92" |

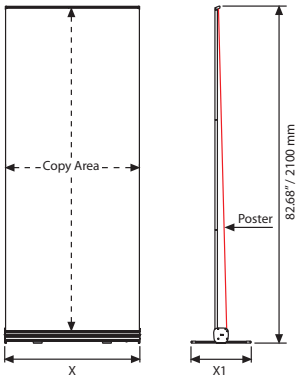
\* W:Width H: Height D: Depth



# Super Eco Roll Banners



Pipe fixation and improved end caps provide a more stable to our Super Eco Roll Banner. The new revised design gives a more elegant look to the product. The aluminum body is silver anodized. Stands at 78.75" high. Has a unique collapsable pipe.



| MATERIAL : Silver anodized aluminum |                 |                 |             |        |        | WEIGHT       | PACKING SIZE           |
|-------------------------------------|-----------------|-----------------|-------------|--------|--------|--------------|------------------------|
| ARTICLE                             | POSTER          | COPY            | DESCRIPTION | X      | X1     | WITH PACKING | *W X H X D             |
| TSZBSE8001                          | 31.50" X 78.74" | 31.50" X 77.56" | With bag    | 32.01" | 9.25"  | 3.880 lbs    | 4.53" X 33.86" X 4.53" |
| TSZBSE1001                          | 39.37" X 78.74" | 39.37" X 77.56" | With bag    | 40.55" | 13.19" | 4.585 lbs    | 4.53" X 41.73" X 4.53" |
| TSZBSE6101                          | 24.02" X 78.74" | 24.02" X 77.56" | With bag    | 24.53" | 9.25"  | 3.593 lbs    | 4.53" X 25.98" X 4.53" |
| TSZBSE9151                          | 36.02" X 78.74" | 36.02" X 77.56" | With bag    | 36.54" | 13.19" | 4.144 lbs    | 4.53" X 38.39" X 4.53" |
| TSZBSE1221                          | 48.03" X 78.74" | 48.03" X 77.56" | With bag    | 48.54" | 17.13" | 5.908 lbs    | 4.53" X 50.59" X 4.53" |

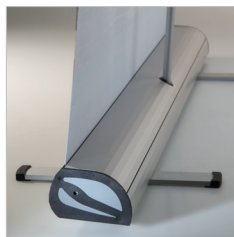


\* W:Width H: Height D: Depth

# Optima Banners



See movie at our website [www.mtdisplays.com.tr](http://www.mtdisplays.com.tr)



As a retractable poster display system, Optima Roll banners are made with the finest materials and craftsmanship. It is easy to operate and requires no tools to set up. Each banner stand features a retractable system which protects poster during transportation. The base houses the poster and feet and furthermore and keeps them protected when not in use. Removable retractable system is ideal for applications where the message changes regularly. Screwed-in pipe holds the poster firm in place.



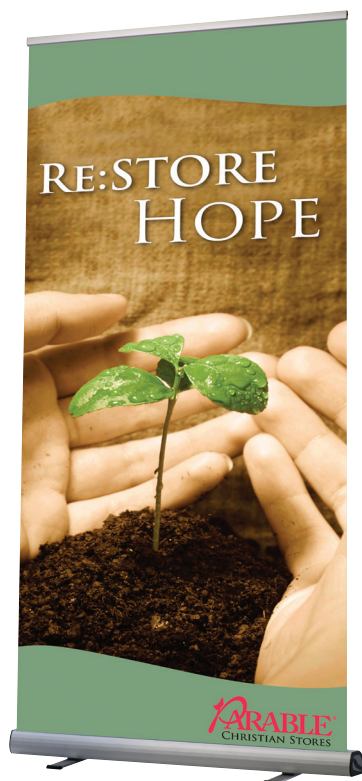
Product comes ready to roll-up with into gray solid transport bag included.



Has unique removable retractable body.



No tool assembly. Please do not loosen the mechanism when the printing is assembled on the top position.



OHIM DM 084 128



Screwed-in stable pipe



Solid bag transport



Aluminum body



The roller mechanism



Clamp

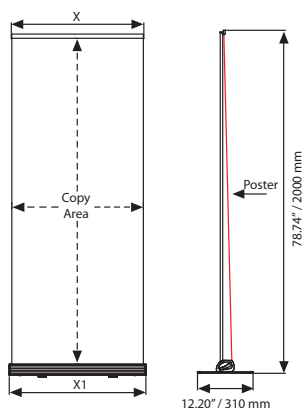


Pipe



Dual colour design end cap

Pin to activate



| MATERIAL : Silver anodized aluminum |                |                 |                 |        |             | WEIGHT       | PACKING SIZE           |
|-------------------------------------|----------------|-----------------|-----------------|--------|-------------|--------------|------------------------|
| ARTICLE                             | EXTERNAL (x-y) | POSTER          | COPY            | X1     | DESCRIPTION | WITH PACKING | *W X H X D             |
| URB001N082                          | 31.73"         | 31.50" X 78.74" | 31.50" X 77.56" | 32.91" | with bag    | 11.023 lbs   | 6.30" X 35.43" X 5.12" |
| URB001N092                          | 39.61"         | 35.43" X 78.74" | 35.43" X 77.56" | 40.79" | with bag    | 12.566 lbs   | 6.30" X 43.31" X 5.12" |
| URB001N242                          | 24.24"         | 24" X 78.74"    | 24" X 77.56"    | 25.42" | with bag    | 9.920 lbs    | 5.5" X 27.17" X 5.51"  |
| URB001N362                          | 36.24"         | 36" X 78.74"    | 36" X 77.56"    | 37.42" | with bag    | 12.345 lbs   | 5.51" X 39.17" X 5.51" |



\*W:Width H: Height D: Depth