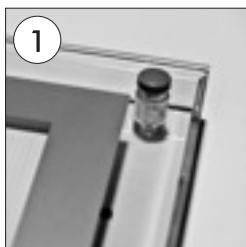
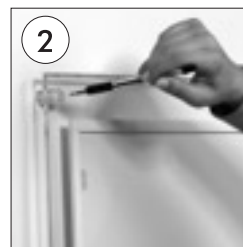


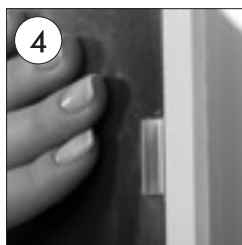
ACRYLED FOR WALL MOUNTING



•Take off acrylic cover in the front. Mark the wall for mounting holes.



•Mount the product with screws and doubles



•Place acrylic cover on the unit and fix it with screws.



•Plug the sockets for electrical connection.



•Please inform the order number on the product or on the carton (e.g. 1/110001394-460) to the place that you have made the purchase if any problem with the product occurs.

•All rights reserved. All pictures, figures and writings are secured internationally by copy-right law. Infringements will be sued by civil and legal law.