

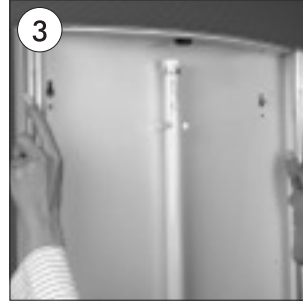
CONVEX LIGHTBOX



•Open all profiles.



•Take-off the anti-reflex cover.



•For mounting on the wall please use the key holes at the back.



•Close the side profiles with the replacing of plexi backing, poster and the PVC cover.



•Please inform the order number on the product or on the carton (e.g. 1/110001394-460) to the place that you have made the purchase if any problem with the product occurs.

•All rights reserved. All pictures, figures and writings are secured internationally by copy-right law. Infringements will be sued by civil and legal law.