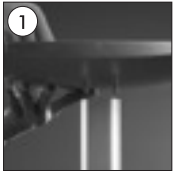
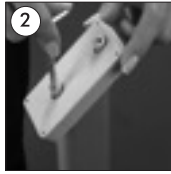


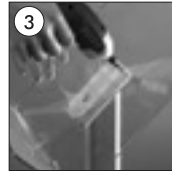
DECORATIVE BROCHURE STAND PLUS



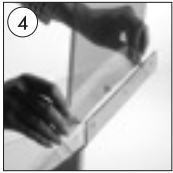
• Complete the stand by screwing the classical base to the elips profile.



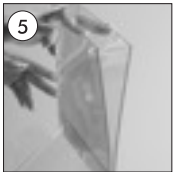
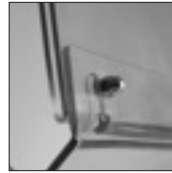
• Fix the plastic part to the profile.



• Screw the plastic part to the brochure stand by centering the holes on the brochure holder to the holes on the plastic part.



• Center the holes on the header to holes over the shelf. Join the screws from inner holes to the nuts on the outer side. That will fix the logo header over the shelf.



• Space the two parts of the header and place in the poster in the middle.



• Please inform the order number on the product or on the carton (e.g. 1/110001394-460) to the place that you have made the purchase if any problem with the product occurs.

• All rights reserved. All pictures, figures and writings are secured internationally by copy-right law. Infringements will be sued by civil and legal law.

1004900