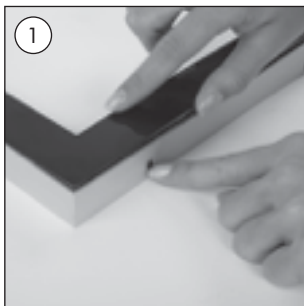


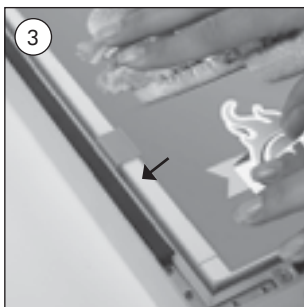
# MAGNETIC SMART LEDBOX



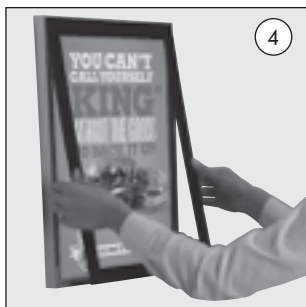
- To remove the front cover, slide the button down and lift the cover with the other hand



- Take off the front cover



- Now place the poster in the clips



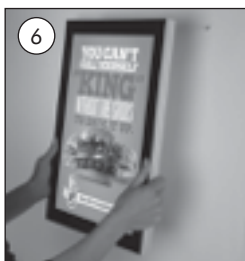
- Place the front cover



## • WALL MOUNTING • WAND MONTAGE • DUVARA MONTAJ



- Fix the screw and wall plug to the wall.

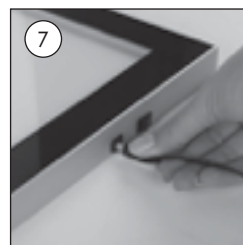


- Hang Magnetic LEDbox by fitting the hangers on the screws.

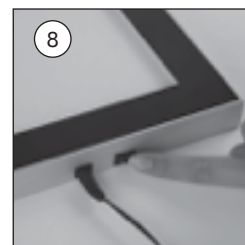


- You can mount the product either in landscape or in portrait position by loosening the screw of the hangers

## • Connection of power supply cable



- Connect the cable of power supply to the power input jack on the frame



- To turn on or off, press the switch

• Please inform the order number on the product or on the carton (e.g. 1/110001394-460) to the place that you have made the purchase if any problem with the product occurs.

• All rights reserved. All pictures, figures and writings are secured internationally by copy-right law. Infringements will be sued by civil and legal law.

1008742

# CAUTION!

- EN**
- 1- Do not step on the light panel nor place the heavy object on the light panel.
  - 2- Do not pull the cable with excessive force.
  - 3- Use correct capacity and voltage of D.C. power supply.  
Failure to observe this instruction could result in breakdown.
  - 4- Do not touch the light panel or electrical devices with wet hand.  
Failure to observe this instruction could result in electrical shocks and severe injuries.
  - 5- Please do not hang right in front of chimney, air conditioning and ventilation outlets.
  - 6- Keep this out of the direct rays of the sun.  
Failure to observe this instruction could result in color changes of acrylic plate.
  - 7- Keep away from fire or severe hot place. Acceptable ambient temperature is max. 35°C.  
Failure to observe this instruction could result in shorten the life time and degradation of brightness of LED light source.