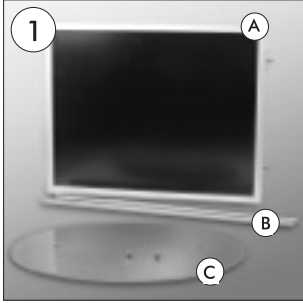
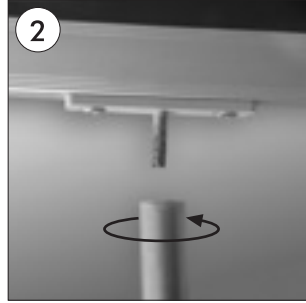


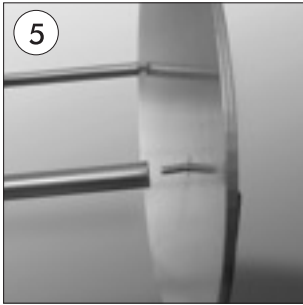
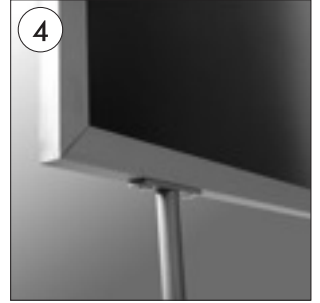
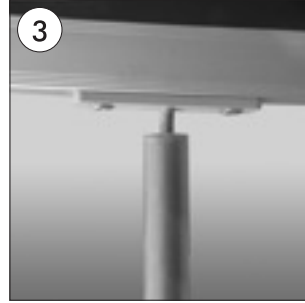
LOVAL INFOBOARD



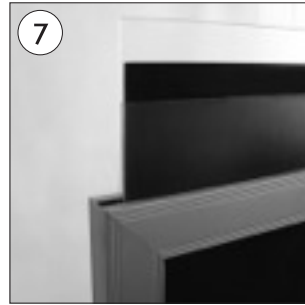
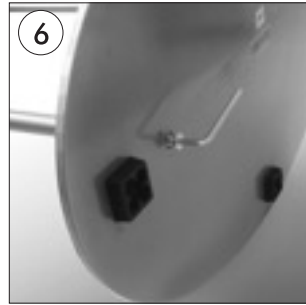
- A-Slide-in Frame
- B-Pipes
- C-Oval Base



- Screw the pipes under the frame.



- Fix the oval base by screwing it to the body pipes with the allen key.



- Place the black panel in between the posters. Place two anti-reflex clear covers on outer sides and slide them through the frame.



• Please inform the order number on the product or on the carton (e.g. 1/110001394-460) to the place that you have made the purchase if any problem with the product occurs.

• All rights reserved. All pictures, figures and writings are secured internationally by copy-right law. Infringements will be sued by civil and legal law.