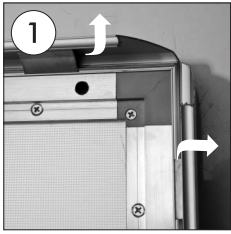
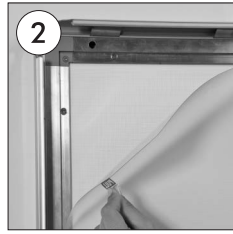


SMART LEDBOX 35 MM

SINGLE SIDED



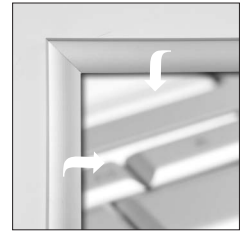
• Open all profiles in direction of arrows.



• Use the PULL sticker to take off the anti-reflex protector.



• Place in the poster. After placing the cover back on the poster, close the profiles.

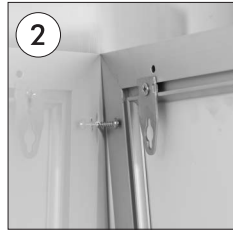


• WALL MOUNTING • ANDIE WAND MONTAGE • DUVARA MONTAJ

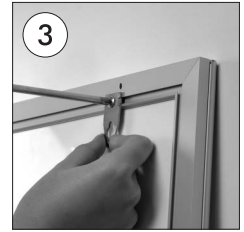
1. Option / Opsiyon



• Fix the screw and wall plug to the wall.

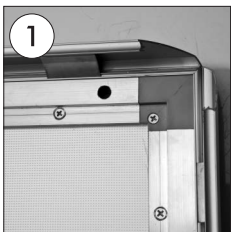


• Hang the Smart Ledbox by fitting the hangers on the screws.



• You can mount the product either in landscape or in portrait position by loosening the screw of the hangers in the channel.

2. Option / Opsiyon

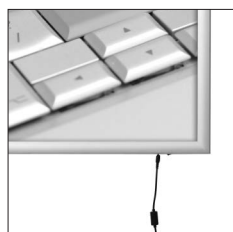


• Open the profiles of the Smart Ledbox. Fix on the wall by using the mounting holes under the profiles with the help of screw and wall plugs.

• POWER SUPPLY USAGE



• Fix the power source to the short side of the Ledbox Frame's Jack.



CAUTION!

• **FRAGILE SWITCH ! REMOVE PADS WHEN FULLY INSTALLED.**



Single sided



CAUTION! / VORSICHT! / DİKKAT!

- EN**
- 1- Do not step on the light panel nor place the heavy object on the light panel.
 - 2- Do not pull the cable with excessive force.
 - 3- Use correct capacity and voltage of D.C. power supply.
Failure to observe this instruction could result in breakdown.
 - 4- Do not touch the light panel or electrical devices with wet hand.
Failure to observe this instruction could result in electrical shocks and severe injuries.
 - 5- Do not subject this light panel to outdoor, high humid and vaporized area.
Failure to observe this instruction could result in breakdown.
 - 6- Keep this out of the direct rays of the sun.
Failure to observe this instruction could result in color changes of acrylic plate.
 - 7- Keep away from fire or severe hot place. Acceptable ambient temperature is max.35°C
Failure to observe this instruction could result in shorten the life time and degradation of brightness of LED light source.