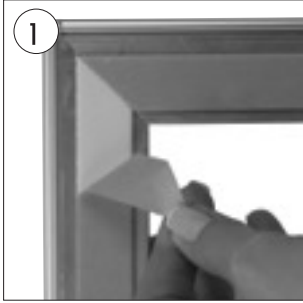
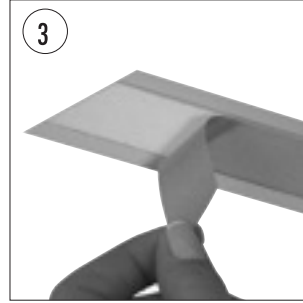
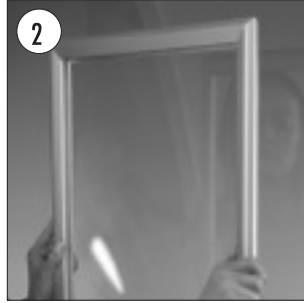


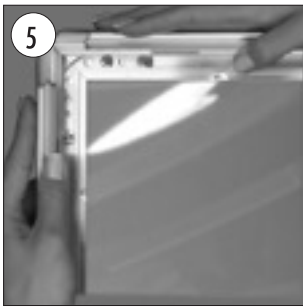
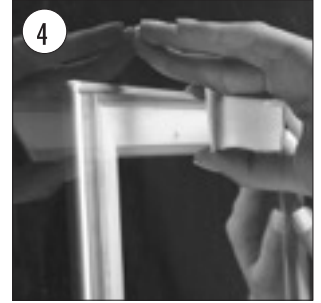
WINDOW FRAME



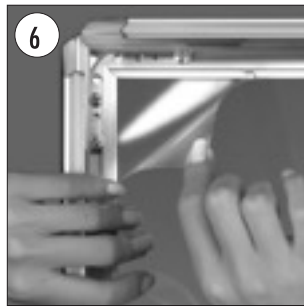
•Take off the yellow protection of the double sided tape along the sides of the frame and post it on the window.



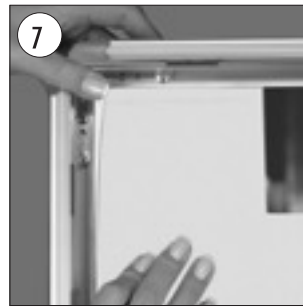
•Take off the yellow protection of the double sided tape along the decorative backing profiles. Post these bars on the other side of the window.



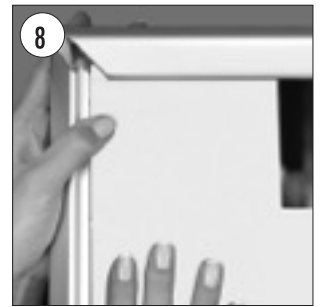
•Open all profiles.



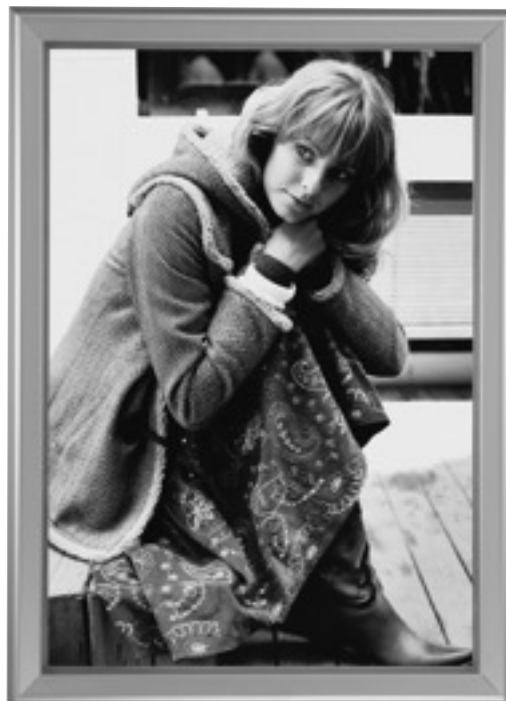
•Take-off the anti-reflex cover.



•Place in the poster.



•After placing the cover back on the poster, close the profiles.



CAUTION:

•For the best application of adhesive tape to window, the applied surface must be dry, clean & flat.